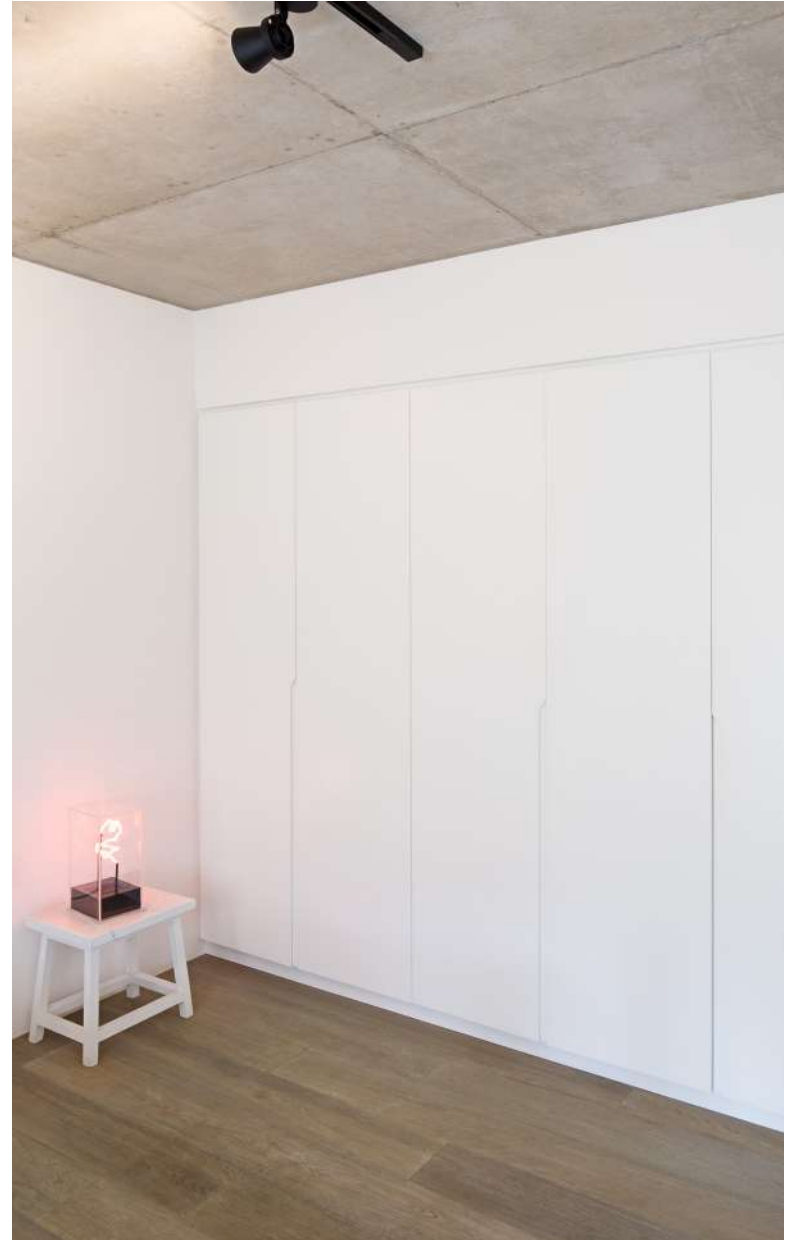


CLOSET

Our closets are designed to blend in your space and satisfy your lifestyle. We have 3 models with unique characters.

Once the base model is picked, we fit the design based on customer requirements.

THE LIFESTYLE CLOSET





EST. 1808
ORIGINAL
GOODS

THE VOGUE CLOSET







THE URBAN CLOSET







A rustic wooden table with a thick, natural edge top and a dark, solid black base. On the table, there is a small white ceramic mug with the letters 'CD' on it, a white cloth, and a black candelabra with three white candles.

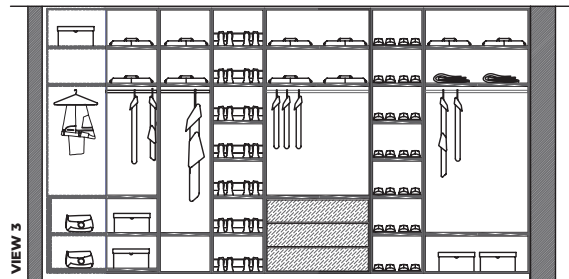
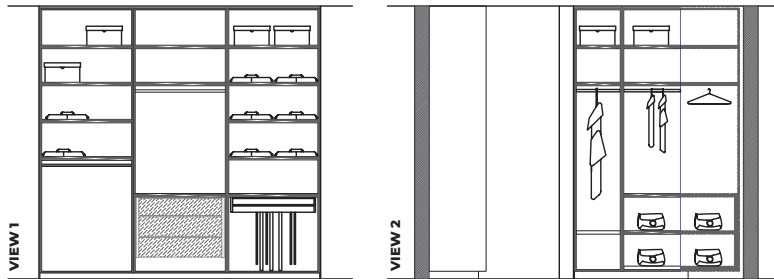
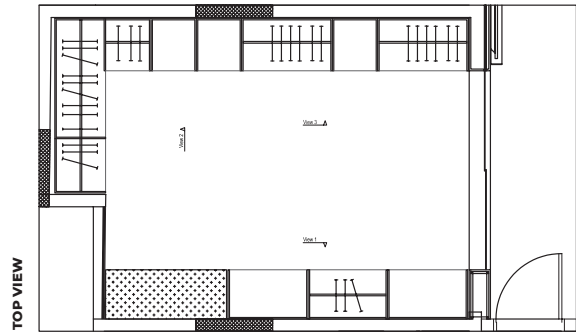
A rustic wooden bench with a thick, natural edge top and four sturdy legs. It is positioned at the foot of the bed. On top of the bench, there are two books: one with a yellow cover and the name 'Carlo, Molino' visible, and another with a red cover.

A large, modular shelving unit made of dark wood and black metal frames. It features multiple open shelves, a hanging rod with several white shirts and a brown bag, and a small wooden cabinet or drawer unit on the right side. The unit is positioned against the wall behind the bed.

A rustic wooden bed frame with a thick, natural edge headboard and footboard. The bed is dressed with a white sheet, a white pillow, a grey textured pillow, and a green fringed blanket. The bed is positioned in the center of the room.

ORDERING A CLOSET

Our designers are here to support along the process with taste and functionality. This initial Closet design service is complementary and includes a layout option, a mood board and an estimate quotation for the project. Our Closets are delivered within 4-6 weeks after placing order.



OPEN DRESSING



BUILT-IN CLOSET



MULTI-PURPOSE

KITmo

© 2019